

South Plains Community Action Association, Inc.

Program Directory

November 2014



Community Services

Head Start/Early Head Start

Health Services

Housing

SPARTAN Transportation

Workforce/Child Care Services

Table of Contents

Program Chart

Program Chart	2
-------------------------------------	---

Community Services

Comprehensive Energy Assistance Program (CEAP)	4
Homeowner Rehabilitation Assistance Program (HOME)	5
Low-Income Housing Energy Assistance Program (LIHEAP)	6
Department of Energy – Weatherization Assistance Program (DOE-WAP)	7

Head Start

Head Start and Early Head Start	9
---	---

Health Services

Community Based Alternatives (CBA)	12
Community Care of Aged and Disabled (CCAD)	13
Community Living Assistance and Support Services (CLASS)	14
Consumer Directed Services (CDA)	15
Consumer Health Insurance Marketplace Enrollment Services (CHIMES)	16
Home Health Medicare	17
Primary Health Care (PHC)	18
Project CHAMPS – Housing Opportunities for People with AIDS (HOPWA)	19
Project CHAMPS – Ryan White Services	20
Senior Companion Program	21
Women, Infants, and Children Nutrition Program (WIC)	22

[Return to Table of Contents](#)

Housing

Section 8 Housing Choice Voucher Program	25
USDA/TDHCA Rental Assistance Program	26

SPARTAN Transportation

Curb-to-Curb Services	28
Medical Transportation	29
Scheduled Route Service	30
SPC Express Commuter Service	31

Workforce/Child Care Services

Child Care Services	33
Choices	34
Non-Custodial Parent (NCP) Choices	35
Out-of-School and In-School Youth	36
SNAP E&T	37
Workforce Investment Act (WIA), WIA Adult, Dislocated Worker	38
Workforce Solutions Core Room	39
Workforce Solutions Workshops	40

Organizational Chart

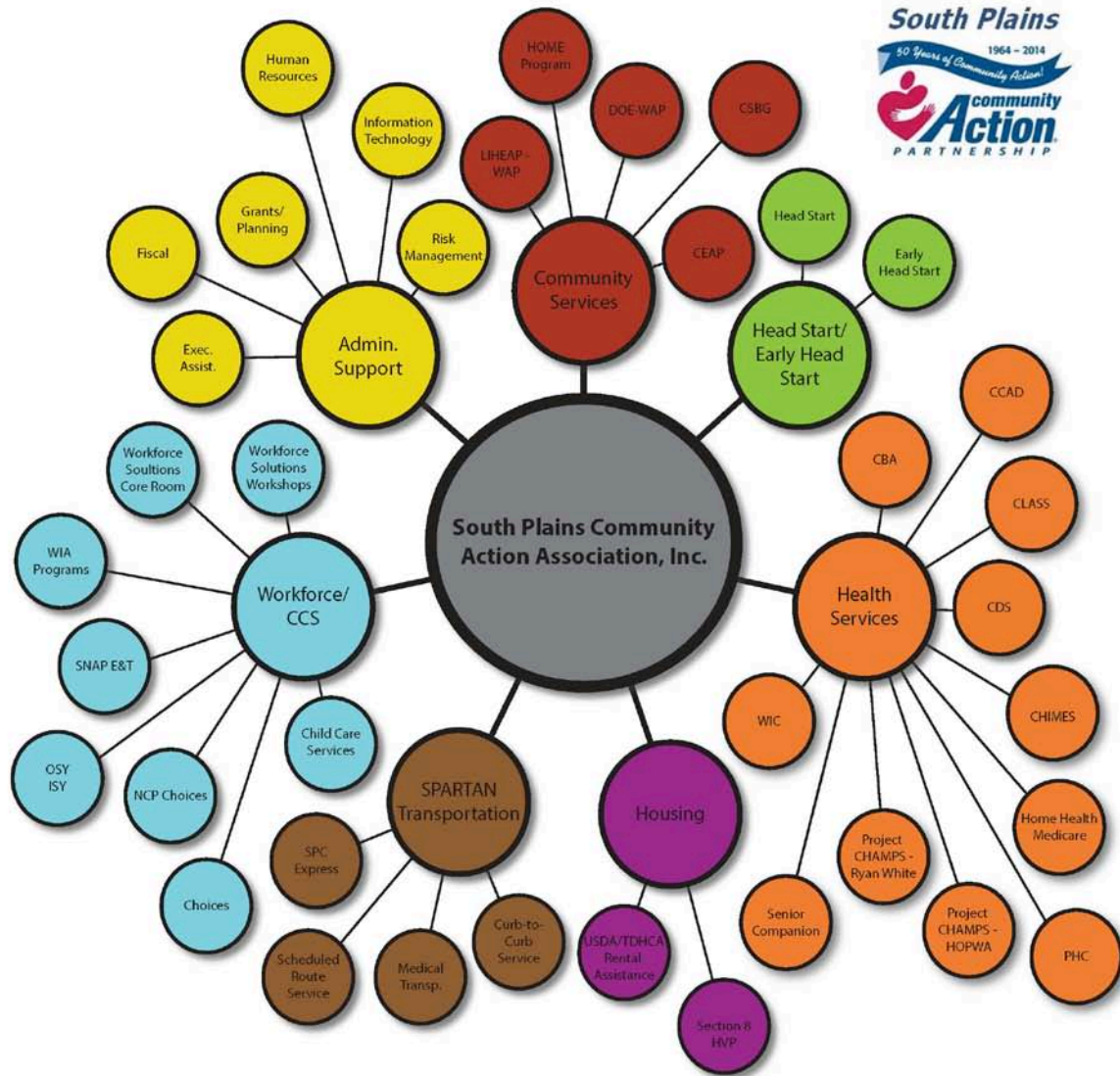
Organizational Chart	42
Return to Table of Contents	



Program Chart



Program Chart



Mission:
Helping People. Changing Lives

Vision:
Empowering communities through self-sufficiency.

Community Action Promise:
Community Action changes people's lives, embodies the spirit of hope, improves communities, and makes America a better place to live. We care about the entire community and are dedicated to helping people help themselves and each other.

[Return to Table of Contents](#)



Community Services



Comprehensive Energy Assistance Program (CEAP)

Program Division: Community Services

General Information

The CEAP Program provides utility assistance to low-income elderly and/or disabled households most vulnerable to the high cost of energy for home heating and cooling; assistance is provided through Utility Assistance Component (general assistance for utility bills) and/or Household Crisis Component (for disconnection notices or purchase of portable heating/cooling units for those that are vulnerable).

Other services include energy education, needs assessment, budget counseling (as it pertains to energy needs), and repair of existing heating and cooling units.

Eligibility Requirements and Intake Procedure

- 125% of Federal poverty level
- Targeted to low-income families; elderly, disabled, and families with children under 5 years old
- Intakes are conducted at neighborhood centers; clients are required to produce:
 - Social Security card
 - Driver's license with photo, or other photo ID

Location and Contact Information

Admin Office 411 Austin Street Levelland, Texas 79336 806-894-6104	Floyd County 701 East Lee Street Floydada, Texas 79235 806-983-3134	Lamb County 912 12th Street, Apt. C-3 Littlefield, Texas 79339 806-385-5425
Bailey County 804 West American Blvd. Muleshoe, Texas 79347 806-272-7537	Garza County South Highway 84 Post, Texas 79356 806-495-2329	Lynn County 1629 Avenue J Tahoka, Texas 79373 806-998-4521
Cochran County 308 West Taylor Street Morton, Texas 79346 806-266-5542	Hale County 1407 West 5th Street Plainview, Texas 79072 806-293-7397	Motley County 809 Bailey Street Matador, Texas 79244 806-347-2881
Crosby County 224 South Berkshire Street Crosbyton, Texas 79322 806-675-7307	Hockley County 411 Austin Street Levelland, Texas 79336 806-894-6104	Terry County 111 North Avenue D Brownfield, Texas 79316 806-637-3712
Dickens County 126 East 5th Street Spur, Texas 79370 806-271-4394	King County 800 Baker Street Guthrie, Texas 79236 806-675-7307 (Crosbyton Center)	Yoakum County 112 West 2nd Street Denver City, Texas 79323 806-592-5451

[Return to Table of Contents](#)

Homeowner Rehabilitation Assistance Program (HOME)

Program Division: Community Services

General Information

The HOME program assists low-income homeowners who are at or below 80% of the area's median income rehabilitate or reconstruct their home. The homeowner works in conjunction with selected local governmental entities and SPCAA to administer the program and related activities. The contracts differ based on participating cities and counties in the South Plains service area.

Eligibility Requirements and Intake Procedure

- At or below 80% of local average median family income
- Targeted to low-income families; special groups and demographics targeted based on local needs
- Potential program recipients will be considered eligible based on the following factors:
 - Must reside in the jurisdiction (city or county) of the contract administrator
 - Must own home
 - Must possess a clear title on the home
 - Must occupy home as principal residence
 - Must be current on all taxes
 - Must qualify with designated demographic (elderly, disabled, family with small children, etc.)
 - Household must be deemed income-eligible

Location and Contact Information

Admin Office
411 Austin Street
Levelland, Texas 79336
806-894-6104

[Return to Table of Contents](#)

Low-Income Housing Energy Assistance Program (LIHEAP-WAP)

Program Division: Community Services

General Information

The LIHEAP program works to increase the energy efficiency of dwelling units through the installation of attic insulation, weatherstripping doors and windows, caulking, and the replacement of inefficient heating and cooling units.

Eligibility Requirements and Intake Procedure

- Income below 125% of current Federal Income Guidelines
- Targeted to low-income families; elderly, disabled, and families with children under 5 years old
 - Weatherization referrals are generated by Neighborhood Center staff, and formal applications are completed by qualifying participants.

Location and Contact Information

Admin Office 411 Austin Street Levelland, Texas 79336 806-894-6104	Garza County South Highway 84 Post, Texas 79356 806-495-2329	Lynn County 1629 Avenue J Tahoka, Texas 79373 806-998-4521
Bailey County 804 West American Blvd. Muleshoe, Texas 79347 806-272-7537	Hale County 1407 West 5th Street Plainview, Texas 79072 806-293-7397	Lubbock County (contact Levelland office at 806-894-5153)
Cochran County 308 West Taylor Street Morton, Texas 79346 806-266-5542	Hockley County 411 Austin Street Levelland, Texas 79336 806-894-6104	Motley County 809 Bailey Street Matador, Texas 79244 806-347-2881
Crosby County 224 South Berkshire Street Crosbyton, Texas 79322 806-675-7307	King County 800 Baker Street Guthrie, Texas 79236 806-675-7307 (Crosbyton Center)	Terry County 111 North Avenue D Brownfield, Texas 79316 806-637-3712
Dickens County 126 East 5th Street Spur, Texas 79370 806-271-4394	Lamb County 912 12th Street, Apt. C-3 Littlefield, Texas 79339 806-385-5425	Yoakum County 112 West 2nd Street Denver City, Texas 79323 806-592-5451
Floyd County 701 East Lee Street Floydada, Texas 79235 806-983-3134		

[Return to Table of Contents](#)

Department of Energy – Weatherization Assistance Program (DOE-WAP)

Program Division: Community Services

General Information

The DOE-WAP program provides for the installation of weatherization measures to increase energy efficiency of a home, including caulking, weatherstripping, ceiling/wall/floor insulation, patching holes in the building envelope, duct work, and repair or replacement of inefficient heating and cooling systems.

Eligibility Requirements and Intake Procedure

- At or below 200% of Federal poverty level
- The target populations are low-income families; elderly, disabled, and families with young children who are experiencing high energy burdens
- Referrals are generated by neighborhood center staff and formal applications are completed by qualifying participants.

Location and Contact Information

Admin Office 411 Austin Street Levelland, Texas 79336 806-894-6104	Garza County South Highway 84 Post, Texas 79356 806-495-2329	Lynn County 1629 Avenue J Tahoka, Texas 79373 806-998-4521
Bailey County 804 West American Blvd. Muleshoe, Texas 79347 806-272-7537	Hale County 1407 West 5th Street Plainview, Texas 79072 806-293-7397	Lubbock County (contact Levelland office at 806-894-5153)
Cochran County 308 West Taylor Street Morton, Texas 79346 806-266-5542	Hockley County 411 Austin Street Levelland, Texas 79336 806-894-6104	Motley County 809 Bailey Street Matador, Texas 79244 806-347-2881
Crosby County 224 South Berkshire Street Crosbyton, Texas 79322 806-675-7307	King County 800 Baker Street Guthrie, Texas 79236 806-675-7307 (Crosbyton Center)	Terry County 111 North Avenue D Brownfield, Texas 79316 806-637-3712
Dickens County 126 East 5th Street Spur, Texas 79370 806-271-4394	Lamb County 912 12th Street, Apt. C-3 Littlefield, Texas 79339 806-385-5425	Yoakum County 112 West 2nd Street Denver City, Texas 79323 806-592-5451
Floyd County 701 East Lee Street Floydada, Texas 79235 806-983-3134		

[Return to Table of Contents](#)



Head Start/Early Head Start



Head Start and Early Head Start

Program Division: Head Start/Early Head Start

General Information

The Head Start and Early Head Start programs provide high-quality, comprehensive early education programming to low-income children and families so that children start school ready to succeed. Personnel are highly trained and facilities are stimulating, healthy, and safe. Head Start and Early Head Start comprehensive early education services support physical and social/emotional development and also provide service to children with disabilities. All children receive age-appropriate screenings and exams and, as needed, follow-up services and vaccinations. The programs engage parents and the community as partners in the comprehensive service delivery system.

Program Requirements/Intake Procedure

General requirements for eligibility are age and family income.

Head Start Eligibility

- Age 3 or 4 by September 1
- Low-income families as determined by the Federal Poverty Guidelines

Early Head Start eligibility

- Infants, ages 6 weeks to 36 months
- Low-income families as determined by the Federal Poverty Guidelines

Required documents include:

- Birth certificate
- Proof of insurance
- Proof of 12 months of income
- Immunization records

Location and Contact Information

Levelland Central Office
410 Houston Street
Levelland, Texas 79336
806-894-2207

Lubbock Central Office
1946 Avenue Q
Lubbock, Texas 79411
806-762-8815

Muleshoe ISD
Dillman Elementary
510 West 18th Street
Muleshoe, Texas 79347
806-272-7382, 806-272-7400
(Ask for Head Start office)

Morton ISD
500 Champion Drive
Morton, Texas 79346
806-266-5250, ext. 312
(Ask for Head Start office)

Crosbyton ISD
204 South Harrison
Crosbyton, Texas 79322
806-675-7331, ext. 1214
(Ask for Head Start office)

Lorenzo ISD
1003 4th Street
Lorenzo, Texas 79343
806-634-5593
(Ask for Head Start office)

Floydada ISD
AB Duncan Elementary School
1011 South 8th Street
Floydada, Texas 79235
806-983-2296
(Ask for Head Start office)

Windham Home Base Head
Start and Early Head Start
206 South Ave. E
Post, Texas 79356
806-495-2544

<p>Creative Zones Early Head Start and Head Start 1106 El Camino Plainview, Texas 79072 806-293-8014</p>	<p>Hale County Head Start Home Base 1106 El Camino Plainview, Texas 79072 806-293-8014</p>	<p>Levelland ISD Levelland ABC 1412 E. Ellis Levelland, Texas 79336 806-894-6959 (Ask for Head Start office)</p>
<p>Levelland Building Blocks 1303 Houston Street Levelland, Texas 79336 806-894-1804</p>	<p>Ropes ISD 304 Ranch Road Ropesville, Texas 79358 806-562-4031 (Ask for Head Start office)</p>	<p>Smyer ISD 401 Lincoln Street Smyer, Texas 79367 806-234-2935 (Ask for Head Start office)</p>
<p>Littlefield ISD Primary: 815 W. 2nd Admin: 1207 East 14th Street Littlefield, Texas 79339 806-385-4551 (Ask for Head Start office)</p>	<p>Little Steps 511 West 7th Street Littlefield, Texas 79339 806-385-5265</p>	<p>Olton ISD H.P. Webb Elementary School 8th & Ave. G Olton, Texas 79064 806-285-2657 (Ask for Head Start office)</p>
<p>Sudan ISD 107 West Highway 303 Sudan, Texas 79371 806-227-2431 (Ask for Head Start office)</p>	<p>Academy 1611 Avenue M Lubbock, Texas 79401 806-749-0093, 806-749-0094, 806-749-0095, 806-749-0096</p>	<p>Eddie Richardson Center 1110 40th Street Lubbock, Texas 79412 806-788-1291, 806-762-8141, 806-687-9260</p>
<p>Slaton ISD 740 South 7th Street Slaton, Texas 79364 806-828-5813 (Ask for Head Start office)</p>	<p>YWCA Legacy 1500 14th Street Lubbock, Texas 79401 806-792-2723</p>	<p>O'Donnell ISD 300 Small Street O'Donnell, Texas 79351 806-428-3244</p>
<p>Bright Beginnings (BISD) 1202 Seagraves Highway Brownfield, Texas 79316 806-637-0757 (Ask for Head Start office)</p>	<p>Terry County EHS Home Base 916 East Hill Street Brownfield, Texas 79316 806-637-1408</p>	<p>Future Success 112 East 13th Street Denver City, Texas 79323 806-592-8314</p>

[Return to Table of Contents](#)



Health Services



Community Based Alternatives (CBA)

Program Division: Health Services

About the program

This program provides assistance with activities of daily living in disabled and/or elderly person's home.

Intake Procedure

Clients apply at local Long Term Department of Aging and Disability Services offices. DADS determines eligibility and contacts SPCAA to provide services.

Location and Contact Information

410 Houston Street
Levelland, Texas 79336
806-894-7872

Services are available in the following counties:
Bailey, Briscoe, Castro, Cochran, Crosby, Dickens, Floyd, Garza, Hale,
Hockley, King, Lamb, Lubbock, Lynn, Motley, Parmer, Swisher, Terry,
and Yoakum

[Return to Table of Contents](#)

Community Care for Aged and Disabled (CCAD)

Program Division: Health Services

About the program

This program provides assistance with activities of daily living in disabled and/or elderly person's home.

Intake Procedure

Clients apply at local Long Term Department of Aging and Disability Services offices. DADS determines eligibility and contacts SPCAA to provide services.

Location and Contact Information

410 Houston Street
Levelland, Texas 79336
806-894-7872

Services are available in the following counties:
Bailey, Briscoe, Castro, Cochran, Crosby, Dickens, Floyd, Garza, Hale,
Hockley, King, Lamb, Lubbock, Lynn, Motley, Parmer, Swisher, Terry,
and Yoakum

[Return to Table of Contents](#)

Community Living Assistance and Support Services (CLASS)

Program Division: Health Services

About the program

This program provides personal assistance and supported living services, habitation training, skilled nursing, PT/OT/ST, and specialized therapy services. Also provides respite, adaptive aides, vehicle and minor home modifications to assist and enable individuals to live independently at home and integrate successfully into the community.

Intake Procedure

Applicants submit name and contact information to statewide interest list. Once slots are opened, applicant is notified by the Department of Aging and Disability Services and the client selects an agency to provide services.

Location and Contact Information

Field's Building
1946 Avenue Q, Second Floor
Lubbock, Texas 79411
806-797-6393

Services are available in the following counties:
Armstrong, Bailey, Briscoe, Carson, Castro, Childress, Cochran,
Collingsworth, Cottle, Crosby, Dallam, Deaf Smith, Dickens, Donley,
Floyd, Garza, Gray, Hale, Hall, Hansford, Hartley, Hemphill, Hockley,
Hutchinson, Kent, King, Lamb, Lipscomb, Lubbock, Lynn, Moore,
Motley, Ochiltree, Oldham, Parmer, Potter, Randall, Roberts,
Sherman, Stonewall, Swisher, Terry, Wheeler, and Yoakum

[Return to Table of Contents](#)

Consumer Directed Services (CDA)

Program Division: Health Services

About the program

A payment option with the CLASS, CBA, PHC/FC, DBMD, MDCP, HCS, PCS, and TxHmL programs that allows the consumers to become the employers of record and to totally self-direct and manage their own attendant and respite services. SPCAA provides financial management services for the purpose of handling the Medicaid dollars and performing the employers' payroll functions. SPCAA is also responsible for educating the consumer/employer about how to be an employer.

Intake Procedure

Clients who are enrolled in state programs that participate in the CDS option are annually offered the choices to manage their own attendants. Those CDS clients who choose SPCAA are referred for services by their Case Manager.

Location and Contact Information

411 Austin Street
Levelland, Texas 79336
806-894-6104

Services are available in the following counties:

Bailey, Briscoe, Castro, Childress, Cochran, Cottle, Crosby, Dickens, Floyd, Garza, Hale, Hall, Hockley, Kent, King, Lamb, Lubbock, Lynn, Motley, Stonewall, Swisher, Terry, Yoakum, Armstrong, Carson, Collingsworth, Dallam, Deaf Smith, Donley, Gray, Hansford, Hartley, Hemphill, Hutchinson, Lipscomb, Moore, Ochiltree, Oldham, Parmer, Potter, Randall, Roberts, Sherman, Wheeler, Archer, Baylor, Clay, Foard, Hardeman, Haskell, Jack, Knox, Montague, Throckmorton, Wichita, Wilbarger, Young, Brown, Callahan, Coleman, Comanche, Eastland, Fisher, Jones, Mitchell, Nolan, Runnels, Scurry, Shackelford, Stephens, Taylor, Wise, Mills, San Saba, Andrews, Borden, Coke, Concho, Crane, Crockett, Dawson, Ector, Gaines, Glasscock, Howard, Irion, Kimble, Loving, Martin, Mason, McCulloch, Menard, Midland, Pecos, Reagan, Reeves, Schleicher, Sterling, Sutton, Terrell, Tom Green, Upton, Ward, Winkler, Brewster, Culberson, Hudspeth, Jeff Davis, and Presidio

[Return to Table of Contents](#)

Consumer Health Insurance Marketplace Enrollment Services (CHIMES)

Program Division: Health Services

About the program

Certified staff provide education and outreach to uninsured individuals above 100% of the Federal Poverty Level who reside in Texas. The purpose of the program is to raise awareness of the Health Insurance Marketplace. Staff assist with preparation of insurance applications, both electronic and on paper; determine affordability of insurance plans and eligibility in Marketplace insurance plans, and enroll in coverage, if appropriate.

Intake Procedure

Appointments with certified staff can be scheduled via telephone by calling 806-771-0736, Monday through Friday. In addition, Navigator staff will be available to assist uninsured individuals during scheduled community outreach, education, and enrollment events.

Location and Contact Information

3307 Ave. X
Lubbock, Texas 79411
806-771-0736

Services are available in the following South Plains counties:
Bailey, Cochran, Crosby, Dickens, Floyd, Garza, Hale, Hockley, King,
Lamb, Lubbock, Lynn, Motley, Terry, and Yoakum

Services are available in the following West Central Texas counties:
Brown, Callahan, Coleman, Comanche, Eastland, Fisher, Haskell,
Jones, Kent, Knox, Mitchell, Nolan, Runnels, Scurry, Shackelford,
Stephens, Stonewall, Taylor, and Throckmorton

[Return to Table of Contents](#)

Home Health Medicare

Program Division: Health Services

About the program

This program provides skilled nursing, PT/OT/ST, home health aides, medical social work, and nutritional counseling by a registered dietician.

Intake Procedure

Clients or their families may call the agency office for a free consult or a physician/hospital discharge planner may refer the patient directly.

Location and Contact Information

410 Houston Street
Levelland, Texas 79336
806-894-7872

Services are available in the following counties:
Bailey, Briscoe, Castro, Cochran, Crosby, Dickens, Floyd, Garza, Hale,
Hockley, King, Lamb, Lubbock, Lynn, Motley, Parmer, Swisher, Terry,
and Yoakum

[Return to Table of Contents](#)

Primary Health Care (PHC)

Program Division: Health Services

About the program

This program provides primary health care services, such as doctor visits, labs, and prescription medication through subcontractors.

Intake Procedure

Screening and referral services are available to all county residents by contacting their local SPCAA neighborhood center.

Location and Contact Information

Admin Office
411 Austin Street
Levelland, Texas 79336
806-894-6104

Crosby County
224 South Berkshire Street
Crosbyton, Texas 79322
806-675-7307
Counties served: Crosby, King,
Motley

Garza County
South Highway 84
Post, Texas 79356
806-495-2329
Counties served: Dickens and
Garza

[Return to Table of Contents](#)

Project CHAMPS – Housing Opportunities for People with AIDS (HOPWA)

Program Division: Health Services

About the program

This program provides tenant-based rental assistance, short term rental assistance, mortgage, and utility assistance payments to prevent homelessness for individuals who have a medical diagnosis of HIV+.

Intake Procedure

Prospective clients must schedule an intake appointment to meet with staff for assessment of need and eligibility for the HOPWA program; clients must provide proof of HIV+ diagnosis.

Location and Contact Information

3307 Avenue X
Lubbock, Texas 79411
806-771-0736

Services are available in the following counties:
Bailey, Briscoe, Crosby, Dickens, Floyd, Garza, Hale, Hockley, King,
Lamb, Lubbock, Lynn, Motley, Terry, and Yoakum

[Return to Table of Contents](#)

Project CHAMPS – Ryan White Services

Program Division: Health Services

About the program

This program provides comprehensive medical and social support services and education to meet the identified needs of HIV+ individuals and their families in the Lubbock Service Delivery Area.

Intake Procedure

Prospective clients must schedule and complete an initial intake with a Project CHAMPS case manager prior to receiving any services; clients must provide proof of HIV+ diagnosis. Appointment can be scheduled by calling 806-771-0736.

Location and Contact Information

3307 Avenue X
Lubbock, Texas 79411
806-771-0736

Services are available in the following counties:
Bailey, Briscoe, Crosby, Dickens, Floyd, Garza, Hale, Hockley, King,
Lamb, Lubbock, Lynn, Motley, Terry, and Yoakum

[Return to Table of Contents](#)

Senior Companion Program

Program Division: Health Services

About the program

Senior Companions provide assistance and friendship to adults who have difficulty with daily living tasks, such as shopping or paying bills. We help these adults remain independent in their homes instead of having to move to more costly institutional care. Senior Companions give families or professional caregivers a much-needed time off from their duties, run errands, and often provide friendship for their clients.

Intake Procedure

Individual service by SCP will be adults – primarily older adults – who have one or more physical, emotional, or mental health limitations and are in need of assistance to achieve and maintain their dignity and highest level of independent living. Contact the SCP office for initial intake.

Location and Contact Information

511 Houston Street
Levelland, Texas 79336
806894-6089

Services are available in the following counties:
Bailey, Cochran, Garza, Hockley, Lamb, Lynn, Terry, and Yoakum

[Return to Table of Contents](#)

Women, Infants, and Children Nutrition Program (WIC)

Program Division: Health Services

About the program

This program offers counseling, breastfeeding support, and issuance of food benefits to income-eligible women and their children.

Intake Procedure

Participants may contact the local call center at 866-907-0080 and request to schedule an appointment for services in their area.

Location and Contact Information

Admin: 411 Austin Street Levelland, Texas 806-894-6104	Cochran County Morton WIC 308 West Taylor Morton, Texas 79346 806-266-5542 800-782-5208	Dickens County Spur WIC 502 North Burlington Spur, Texas 79370 806-271-3306 800-782-5028
Garza County Post WIC South U.S. Highway 84 Post, Texas 79373 806-495-2329 800-782-5028	Hockley County Levelland WIC 411 Austin Street Levelland, Texas 79336 806-894-6104	Lubbock County Celia Ann WIC 602 West Loop 289, Suite 100 Lubbock, Texas 79416 806-747-0178
Lubbock County Central Lubbock WIC 1946 Ave. Q Lubbock, Texas 79411 806-747-0104	Lubbock County Freedom Square WIC 1301 50th Street, Space #10 Lubbock, Texas 79412 806-747-0006	Lubbock County Parkway Clinic WIC 1811 Parkway Drive Lubbock, Texas 79403 806-747-0182
Lubbock County Slaton WIC 22nd and Division Street Slaton, Texas 79364 800-782-5028 for appointment	Lynn County Tahoka WIC 1517 South 2nd Street Tahoka, Texas 79373 806-998-4521 800-782-5028	Terry County Brownfield WIC 111 Ave. D Brownfield, Texas 79316 806-637-3712
Yoakum County Denver City WIC 112 West 2nd Street Denver City, Texas 79323 806-592-4518	Andrews County Andrews WIC 801 North Main Street, Suite A Andrews, Texas 79714 866-907-0080	Crane County Crane WIC 106 West 5th Street Crane, Texas 79731 866-907-0080

<p>Crockett County Ozona WIC 106 Medical Drive Ozona, Texas 76973 866-907-0080</p>	<p>Dawson County Lamesa WIC 501 South 1st Street Lamesa, Texas 79331 866-907-0080</p>	<p>Ector County Odessa Tower WIC 835 Tower Drive, Suite 34 Odessa, Texas 79761 866-907-0080</p>
<p>Gaines County Seminole WIC 700 Hobbs Highway Seminole, Texas 79360 866-907-0080</p>	<p>Martin County Stanton WIC 413 North St. Theresa Stanton, Texas 79782 866-907-0080</p>	<p>Midland County Midland WIC 2301 N. Big Spring Midland, Texas 79705 866-907-0080</p>
<p>Pecos County Fort Stockton WIC 461 South Highway 285, Suite 1B Fort Stockton, Texas 79735 866-907-0080</p>	<p>Reeves County Pecos WIC 700 Dogett, Suite C Pecos, Texas 79772 866-907-0080</p>	<p>Upton County McCamey WIC 100 East 7th Street McCamey, Texas 79752 866-907-0080</p>
<p>Ward County Monahans WIC 405 East A Street Monahans, Texas 79756 866-907-0080</p>	<p>Winkler County Kermit WIC 203 West Halley Kermit, Texas 79745 866-907-0080</p>	

[Return to Table of Contents](#)



Housing



Section 8 Housing Choice Voucher Program

Program Division: Housing

About the program

The housing choice voucher program is the federal government’s major program for assisting very low-income families, the elderly, and the disabled to afford decent, safe, and sanitary housing. Housing assistance is provided on behalf of the family or individual, participants are able to find their own housing, including single-family house, townhouses, or apartments. The participant is free to choose any housing that meets the requirements of the program; it is not limited to units located in subsidized housing projects. Housing choice vouchers are administered locally by public housing agencies (PHAs). Families issued a housing vouchers are responsible for finding a suitable housing unit where the owner agrees to rent under the program; this may include the family’s present residence. Rental units must meet minimum standards of health and safety, as determined by the PHA. A housing subsidy is paid to the landlord directly by the PHA on behalf of the participating family. The family then pays the difference between the actual rent charged by the landlord and the amount subsidized by the program. Under certain circumstances a family may use its voucher to purchase a modest home.

Eligibility

Eligibility for a housing voucher is determined based on the total annual gross income, criminal background, and family size, and is limited to US citizens and specified categories of non-citizen who have eligible immigration status. In general, the family’s income may not exceed 50% of the median income for area. Contact a SPCAA neighborhood center to set up an appointment for the initial intake.

Location and Contact Information

Admin Office 410 Houston Street Levelland, Texas 79336 806-894-5153	Bailey County 804 West American Blvd. Muleshoe, Texas 79347 806-272-7537	Cochran County 308 West Taylor Street Morton, Texas 79346 806-266-5542
Garza County South Highway 84 Post, Texas 79356 806-495-2329	Hockley County 411 Austin Street Levelland, Texas 79336 806-894-6104	Lamb County 912 12th Street, Apt. C-3 Littlefield, Texas 79373 806-998-4521
Lubbock County (Contact Levelland office for information)	Lynn County 1629 Avenue J Tahoka, Texas 79373 806-998-4521	Terry County 111 North Avenue D Brownfield, Texas 79316 806-637-3712
Yoakum County 112 West 2nd Street Denver City, Texas 79323 806-592-5451		

[Return to Table of Contents](#)

USDA/TDHCA Rental Assistance Program

Program Division: Housing

About the program

This program provides affordable housing in a multi-family setting to very low and low income families.

Eligibility

Eligibility for rental assistance is determined based on income, family size, criminal background, and is limited to US citizens and specified categories of non-citizens who have eligible immigration status.

Location and Contact Information

Cochran County

901 SW 4th Street, Unit B

Morton, Texas 79346

806-266-1420

Hockley and Lamb Counties

922 MLK, Unit E1

Littlefield, Texas 79339

806-385-0008

Yoakum County

115 S. Jaycee Avenue

Denver City, Texas 79323

806-592-5120

[Return to Table of Contents](#)



SPARTAN Transportation



Curb-to-Curb Service

Program Division: SPARTAN Transportation

General Information

This service, also known as demand response, is available in the rural transit district. Curb-to-curb service is the standard level of service, with door-to-door service available on request for elderly persons and individuals with disabilities.

Additional Information

Call SPARTAN at 1-800-462-8747 or 806-894-3800 for more information on availability of service and the applicable fares.

SPARTAN is on Facebook at <https://www.facebook.com/SpartanPublicTransit>.

There are no eligibility requirements to ride any of SPARTAN's public transportation services.

All passengers must make reservations at least 24 hours in advance. Reservations are honored on a first-call, first-served basis based on the availability of a driver and vehicle. At the time the trip is requested and confirmed, passengers are given a pre-determined pick-up time. SPARTAN strives to pick up passengers within 15 minutes of their scheduled time.

Passenger fares must be paid for all trips. Individuals who qualify for various Federal or state programs may qualify to have their fare fully or partially subsidized by one of the following: Medicaid, WIC, Family Planning, Choices, TANF, WIA, Senior Companion, Victims Assistance programs, Texas Rehabilitation, CEAP, Community Services Block Grant, South Plains Rural Health Services, and others.

Location and Contact Information

SPARTAN Admin Office
1105 W. Highway 114
Levelland, Texas 79336
806-894-3800
800-462-8747
spartaninfo@spscaa.org

SPARTAN services are available in the following counties:
Bailey, Cochran, Crosby, Dickens, Floyd, Garza, Hale, Hockley, King
Lamb, Lubbock (non-urbanized), Lynn, Mitchell, Motley, Scurry,
Terry, and Yoakum

[Return to Table of Contents](#)

Medical Transportation

Program Division: SPARTAN Transportation

General Information

SPARTAN is an approved contractor to provide non-emergency medical transportation services for Medicaid-approved trips in 17 counties. Medicaid clients should call 1-877-633-8747 to obtain a confirmation number from Medicaid. Once Medicaid authorizes transportation, the client should call SPARTAN to schedule their ride.

Additional Information

Call SPARTAN at 1-800-462-8747 or 806-894-3800 for more information on availability of service and the applicable fares.

SPARTAN is on Facebook at <https://www.facebook.com/SpartanPublicTransit>.

There are no eligibility requirements to ride any of SPARTAN's public transportation services.

All passengers must make reservations at least 24 hours in advance. Reservations are honored on a first-call, first-served basis based on the availability of a driver and vehicle. At the time the trip is requested and confirmed, passengers are given a pre-determined pick-up time. SPARTAN strives to pick up passengers within 15 minutes of their scheduled time.

Passenger fares must be paid for all trips. Individuals who qualify for various Federal or state programs may qualify to have their fare fully or partially subsidized by one of the following: Medicaid, WIC, Family Planning, Choices, TANF, WIA, Senior Companion, Victims Assistance programs, Texas Rehabilitation, CEAP, Community Services Block Grant, South Plains Rural Health Services, and others.

Location and Contact Information

SPARTAN Admin Office
1105 W. Highway 114
Levelland, Texas 79336
806-894-3800
800-462-8747
spartaninfo@spscaa.org

SPARTAN services are available in the following counties:
Bailey, Cochran, Crosby, Dickens, Floyd, Garza, Hale, Hockley, King
Lamb, Lubbock (non-urbanized), Lynn, Mitchell, Motley, Scurry,
Terry, and Yoakum

[Return to Table of Contents](#)

Scheduled Route Service

Program Division: SPARTAN Transportation

General Information

Scheduled route service is available Monday through Saturday. Scheduled route service provides trips on shared-ride vehicles that have usual, customary travel paths – one town to another, or from designated points in town to predetermined drop-off sites within the town.

To use scheduled route service, call SPARTAN at least 24 hours in advance, and no later than 3:00 p.m. the day before the trip is needed, because the routes only run if a customer requests service. Customers can subscribe to scheduled route service for regular standing-order trips, such as work trips.

Additional Information

Call SPARTAN at 1-800-462-8747 or 806-894-3800 for more information on availability of service and the applicable fares.

SPARTAN is on Facebook at <https://www.facebook.com/SpartanPublicTransit>.

There are no eligibility requirements to ride any of SPARTAN's public transportation services.

All passengers must make reservations at least 24 hours in advance. Reservations are honored on a first-call, first-served basis based on the availability of a driver and vehicle. At the time the trip is requested and confirmed, passengers are given a pre-determined pick-up time. SPARTAN strives to pick up passengers within 15 minutes of their scheduled time.

Passenger fares must be paid for all trips. Individuals who qualify for various Federal or state programs may qualify to have their fare fully or partially subsidized by one of the following: Medicaid, WIC, Family Planning, Choices, TANF, WIA, Senior Companion, Victims Assistance programs, Texas Rehabilitation, CEAP, Community Services Block Grant, South Plains Rural Health Services, and others.

Location and Contact Information

SPARTAN Admin Office
1105 W. Highway 114
Levelland, Texas 79336
806-894-3800
800-462-8747
spartaninfo@spscaa.org

SPARTAN services are available in the following counties:
Bailey, Cochran, Crosby, Dickens, Floyd, Garza, Hale, Hockley, King
Lamb, Lubbock (non-urbanized), Lynn, Mitchell, Motley, Scurry,
Terry, and Yoakum

[Return to Table of Contents](#)

SPC Express Commuter Service

Program Division: SPARTAN Transportation

General Information

SPARTAN offers express scheduled service to and from South Plains College's Levelland, Reese Center, and Byron Martin campuses and into Lubbock.

SPC Express schedules change with each academic session. Visit www.spartanpublictransit.com or call 806-894-3800 for current schedule and fare information. Prepaid punch cards and weekly, monthly, and semester passes are available.

Additional Information

SPARTAN has a mobile app for the SPC Express Service. Scan the code for access to the app:



SPARTAN is on Facebook at <https://www.facebook.com/SpartanPublicTransit>.

There are no eligibility requirements to ride any of SPARTAN's public transportation services.

Passenger fares must be paid for all trips. Individuals who qualify for various Federal or state programs may qualify to have their fare fully or partially subsidized by one of the following: Medicaid, WIC, Family Planning, Choices, TANF, WIA, Senior Companion, Victims Assistance programs, Texas Rehabilitation, CEAP, Community Services Block Grant, South Plains Rural Health Services, and others.

Location and Contact Information

SPARTAN Admin Office
1105 W. Highway 114
Levelland, Texas 79336
806-894-3800
800-462-8747
spartaninfo@spcaa.org

This service is provided in Lubbock and Hockley counties only

[Return to Table of Contents](#)



Workforce/Child Care Services



Child Care Services

Program Division: Workforce Solutions Child Care Services

About the program

Workforce Solutions South Plains administers Child Care Services (CCS) funding to help parents pay for child care while they work, go to school, or participate in job training to become self-sufficient. Those eligible for child care assistance include those under the age of thirteen and:

- Whose parents are receiving Temporary Assistance to Needy Families (TANF)
- Whose parents have recently stopped receiving TANF benefits because of earned income
- Whose parents are in job training programs such as Choices or those offered through the Workforce Investment Act (WIA)
- Whose parents are receiving food stamps
- Whose parents qualify as low income and need help paying for child care so they can continue to work or attend training
- Teen parents from low-income families who need child care to attend school or to complete a GED
- Whose parents qualify as low income and have children with disabilities

Intake Procedure

CCS will accept the following documents to meet the requirements for income verification:

- Three most current paycheck stubs
- Payroll printout from employer with three most current consecutive pay periods of data
- Employment Verification statement for new job or breaks in employment
- Unemployment Insurance (UI) verification through state database
- Income tax return for most recent year for self-employed customers
- Office of Attorney General printout for Child Support payment history
- Informal Child Support Agreement and supporting documentation
- Assistance verification form or copies of money orders or checks
- DHS print screen or statement of benefits

Location and Contact Information

1213 13th Street
Lubbock, Texas 79401
806-744-3572

[Return to Table of Contents](#)

Choices

Program Division: Workforce Solutions

About the program

Choices operates under a work-first service model. Upon applying for Temporary Assistance for Needy Families (TANF) assistance through the Texas Health and Human Services Commission (HHSC), and throughout delivery of benefits and employment services, Choices participants receive a consistent message:

- Government assistance is temporary
- Texans are responsible for the support of themselves and their families
- Employment is the goal

Both state and federal welfare reform legislation emphasizes personal responsibility, time-limited case assistance benefits, and the goal of work instead of public assistance.

Choices provides service to two populations:

- Single-parent families
- Two-parent families

Intake Procedure

HHSC determines customers' TANF eligibility. For more information dial 2-1-1.

Location and Contact Information

Lubbock Career Center 1218 14th Street Lubbock, Texas 79401 806-765-5038 Serving: Lubbock, Garza, King, Motley, and Crosby counties	Plainview Career Center 1001 North I-27, Suite 228 Plainview, Texas 79072 806-293-8566 Serving: Hale and Floyd counties	Levelland Career Center 1102 Austin Street Levelland, Texas 79336 806-894-5005 Serving: Hockley County
Brownfield Career Center 1121-B Tahoka Road Brownfield, Texas 79316 806-637-4234 Serving: Terry and Yoakum counties	Littlefield Career Center 2401 Hall Avenue Littlefield, Texas 79339 806-385-7897 Serving: Lamb County	Muleshoe Career Center 203 Main Street Muleshoe, Texas 79347 806-272-7540 Serving: Bailey County

[Return to Table of Contents](#)

Non-Custodial Parent (NCP) Choices

Program Division: Workforce Solutions

About the program

The Noncustodial Parent (NCP) Choices program is funded by Temporary Assistance for Needy Families (TANF) and is authorized under the TANF State Plan as well as federal statutes and regulations.

Initiated in August 2005, NCP Choices is a collaborative effort of the Office the Attorney General of Texas, the Texas Workforce Commission, and family court judges. The program targets low-income unemployed or underemployed noncustodial parents who are behind on their child support payments and whose children are current or former recipients of public assistance.

The goal of the program is to help NCPs overcome substantial barriers to employment and career advancement while becoming economically self-sufficient and making consistent child support payments.

Intake Procedure

NCPs are court-ordered into the program.

Location and Contact Information

Lubbock Career Center 1218 14th Street Lubbock, Texas 79401 806-765-5038 Serving: Lubbock, Garza, King, Motley, and Crosby counties	Plainview Career Center 1001 North I-27, Suite 228 Plainview, Texas 79072 806-293-8566 Serving: Hale and Floyd counties	Levelland Career Center 1102 Austin Street Levelland, Texas 79336 806-894-5005 Serving: Hockley County
Brownfield Career Center 1121-B Tahoka Road Brownfield, Texas 79316 806-637-4234 Serving: Terry and Yoakum counties		

[Return to Table of Contents](#)

Out-of-School Youth and In-School Youth

Program Division: Workforce Solutions

About the programs

Out of School Youth (OSY) programs assist youth not in high school or post-secondary school with:

- Tuition assistance (depending on specific training selected)
- Books, fees, supplies
- Fuel, bus tokens
- GED/credentials
- Job search
- Job readiness and placement
- Incentives

In-School Youth (ISY) programs assist youth who are currently enrolled in high school with:

- Dual credit class
- Assistance with CTE payments
- High school diploma/GED/credentials
- Job search
- Job readiness and placement
- Leadership development
- Community Service
- Incentives

Qualifications

Must meet one or more of the following requirements:

- Ages 14-21
- U.S. citizen or legal resident
- Pregnant or parenting
- Low income (SNAP/TANF/Federal Income Guidelines)
- An offender
- Homeless, runaway, or foster youth
- First generation college youth

Other qualification may be determined during a scheduled appointment with a Youth Services staff member.

Location and Contact Information

<p>Lubbock Workforce Solutions 1218 14th Street Lubbock, Texas 79401 806-765-5038 Serving: Lubbock, Garza, King, Motley, and Crosby counties</p>	<p>Plainview Workforce Solutions 1001 North I-27, Suite 228 Plainview, Texas 79072 806-293-8566 Serving: Hale and Floyd counties</p>	<p>Levelland Workforce Solutions 1102 Austin Street Levelland, Texas 79336 806-894-5005 Serving: Hockley County</p>
<p>Brownfield Workforce Solutions 1121-B Tahoka Road Brownfield, Texas 79316 806-637-1223 Serving: Terry and Yoakum counties</p>	<p>Littlefield Workforce Solutions 2401 Hall Ave, Suite B Littlefield, Texas 79339 806-385-7897 Serving: Lamb County</p>	<p>Muleshoe Workforce Solutions 203 Main Street Muleshoe, Texas 79347 806-272-7540 Serving: Bailey County</p>

[Return to Table of Contents](#)

SNAP E&T

Program Division: Workforce Solutions

About the program

Supplemental Nutrition Assistance Employment and Training Program (SNAP E&T) assists SNAP recipients in entering employment through participation in allowable activities such as job search, vocational training, non-vocational education, and workforce activities that promote self-sufficiency.

Specific eligible activities can include:

- Job search
- Non-vocational education
- Work experience
- Workfare (ABAWDs only)
- WIA work programs
- Trade Adjustment Assistance (TAA) work programs
- Unsubsidized employment (allowable only if enrolled in other SNAP E&T activities)

Intake Procedure

Eligibility for SNAP is determined by the Texas Health and Human Services Commission, located at 1716 Parkway Drive in Lubbock. Call 2-1-1 for more information.

Location and Contact Information

Lubbock Workforce Solutions 1218 14th Street Lubbock, Texas 79401 806-765-5038 Serving: Lubbock, Garza, King, Motley, and Crosby counties	Plainview Workforce Solutions 1001 North I-27, Suite 228 Plainview, Texas 79072 806-293-8566 Serving: Hale and Floyd counties	Levelland Workforce Solutions 1102 Austin Street Levelland, Texas 79336 806-894-5005 Serving: Hockley County
Brownfield Workforce Solutions 1121-B Tahoka Road Brownfield, Texas 79316 806-637-4234 Serving: Terry and Yoakum counties	Littlefield Workforce Solutions 2401 Hall Ave, Suite B Littlefield, Texas 79339 806-385-7897 Serving: Lamb County	

[Return to Table of Contents](#)

Workforce Investment Act (WIA), WIA Adult, Dislocated Worker

Program Division: Workforce Solutions

About the program

The Workforce Investment Act (WIA) offers an integrated and comprehensive range of services consisting of workforce development activities benefitting job seekers – dislocated workers, youth, incumbent workers, new entrants to the workforce, veterans, individuals with disabilities, and employers. WIA’s objective is to meet employers’ needs by increasing employment, job retention, earnings, and occupational skills among all job seeker populations.

Job seekers first must meet basic WIA eligibility requirements for WIA-funded services. To be eligible to participate in WIA Title I services, adults, dislocated workers (no age limits), and youth must:

- Be 18 years of age or older (adults)
- Be between 14 and 21 years of age (youth programs)
- Be a citizen or noncitizen authorized to work in the U.S.
- Meet Military Selective Services registration requirements (males only)

Items to bring to interview

- Completed WIA pre-application
- Birth certificate
- Social Security card (original only)
- Current driver’s license or photo ID
- Employment termination or Layoff Notice (if applicable)

Parent or legal guardian must accompany applicants under age 18. Additional documents may be required.

Location and Contact Information

Workforce Solutions - Lubbock 1218 14th Street Lubbock, Texas 79401 806-765-5038 Serving: Lubbock, Garza, King, Motley, and Crosby counties	Workforce Solutions - Plainview 1001 North I-27, Suite 228 Plainview, Texas 79072 806-293-8566 Serving: Hale and Floyd counties	Workforce Solutions - Levelland 1102 Austin Street Levelland, Texas 79336 806-894-5005 Serving: Hockley County
Workforce Solutions - Brownfield 1121-B Tahoka Road Brownfield, Texas 79316 806-637-1223 Serving: Terry and Yoakum counties	Workforce Solutions - Littlefield 2401 Hall Avenue Littlefield, Texas 79339 806-385-7897 Serving: Lamb County	Workforce Solutions - Muleshoe 203 Main Street Muleshoe, Texas 79347 806-272-7540 Serving: Bailey County

[Return to Table of Contents](#)

Workforce Solutions Core Room

Program Division: Workforce Solutions

General Information

The Core Room offers many free resources to support job search efforts, as well as Workforce Investment Act programs that can provide more intensive assistance in getting back to work. Professional staff at each workforce center are available for assistance.

Job Search Resources

- Self-help services include www.WorkInTexas.com
- Workforce Solutions Career Centers provide access to several resources for job seekers, including:
 - Public access computers, including internet access and resume templates
 - Phones
 - Photocopying
 - Faxing
 - Scanning
- A Job Search Seminar and topical workshops are held weekly in full service centers.
- On-site employer hiring events are available when announced.

Location and Contact Information

Lubbock Career Center 1218 14th Street Lubbock, Texas 79401 806-765-5038 Serving: Lubbock, Garza, King, Motley, and Crosby counties	Plainview Career Center 1001 North I-27, Suite 228 Plainview, Texas 79072 806-293-8566 Serving: Hale and Floyd counties	Levelland Career Center 1102 Austin Street Levelland, Texas 79336 806-894-5005 Serving: Hockley County
Brownfield Career Center 1121-B Tahoka Road Brownfield, Texas 79316 806-637-1223 Serving: Terry and Yoakum counties	Littlefield Career Center 2401 Hall Ave, Suite B Littlefield, Texas 79339 806-385-7897 Serving: Lamb County	

[Return to Table of Contents](#)

Workforce Solutions Workshops

Program Division: Workforce Solutions

General Orientation

Offered every Tuesday and Thursday, except holidays, from 9:00 a.m. to 9:30 a.m. Provides general information regarding Workforce services; all interested individuals are welcome.

Job Search 101

Offered most Tuesdays from 8:00 a.m. to 11:30 a.m. Covers new strategies and job skills that can help with achieving career success, including networking.

Virtual Job Search

Offered most Wednesdays from 8:00 a.m. to 11:00 a.m. Covers innovative strategies for job search, resume and application preparation, and ways to utilize social media in job searches.

Making or Breaking an Interview

Offered most Thursdays from 8:00 a.m. to 11:00 a.m. Covers successful job interview strategies.

Pay Day Friday

Offered most Fridays from 8:00 a.m. to 11:00 a.m. Covers money management strategies, preparing a personal spending plan, building a relationship with a financial institution.

Job Search Seminar

Offered most Wednesdays from 9:00 a.m. to 12:30 p.m. Covers success strategies for job searches, including communication skills, hidden job markets, resume preparation, and interviewing techniques.

Rapid Re-Employment Orientation

Offered on most Thursdays from 9:00 a.m. to 11:00 a.m. for individuals receiving Unemployment Insurance compensation.

Location and Contact Information

Lubbock Career Center
1218 14th Street
Lubbock, Texas 79401
806-765-5038

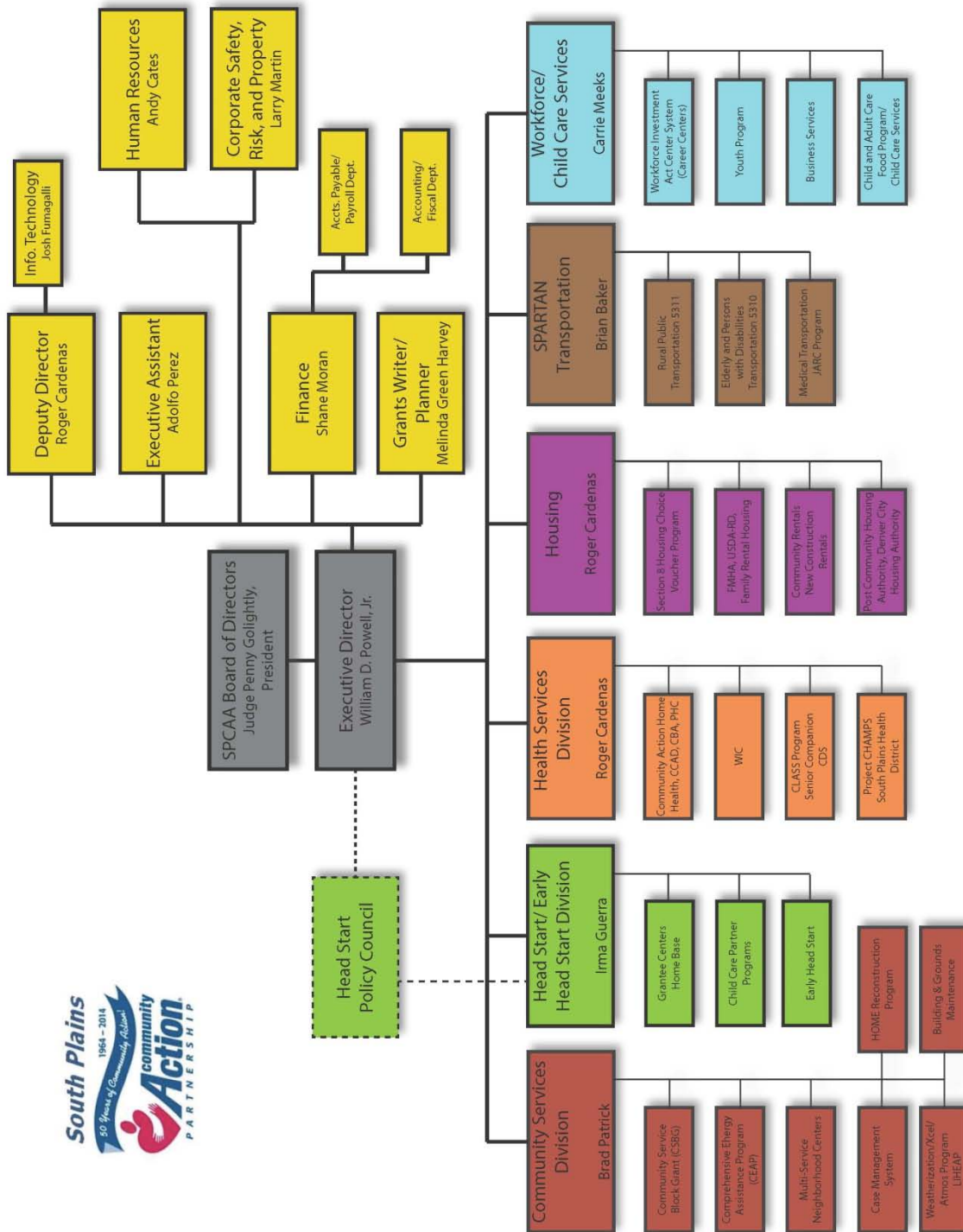
[Return to Table of Contents](#)



Organizational Chart



Organizational Chart



[Return to Table of Contents](#)